

CASA CIVIL  
PROGRAMA DE  
PARCERIAS DE  
INVESTIMENTOS **PPI**

# BRAZILIAN INVESTMENTS PARTNERSHIPS PROGRAM

November, 2019



# Brazil in the world

9<sup>th</sup> largest economy:  
GDP **US\$ 1.9 trillion**

5<sup>th</sup> largest  
land area:  
**8.358.140km<sup>2</sup>**

5<sup>th</sup> largest  
population:  
**210.1 million  
people**

8<sup>th</sup> largest consumer market:  
**US\$ 1.2 trillion**

Household consumption  
expenditure equals

**63% of GDP**

4<sup>th</sup> largest FDI destination  
in 2018: **US\$ 88.3 billion**  
(40% of Latin America's  
total FDI inflow)

One of the main global  
producers and exporters of  
**iron ore, soy bean, animal  
protein, coffee, machinery  
and aircraft**

# Reforms

*The Brazilian Government has been doing its homework for growth recovery*

## ***Pension Reform***

*US\$ 196 billion to be saved in the next 10 years, limiting privileges*

## ***Tax Reform***

*Simplifying the tax system to boost economy*

## ***Administrative Reform***

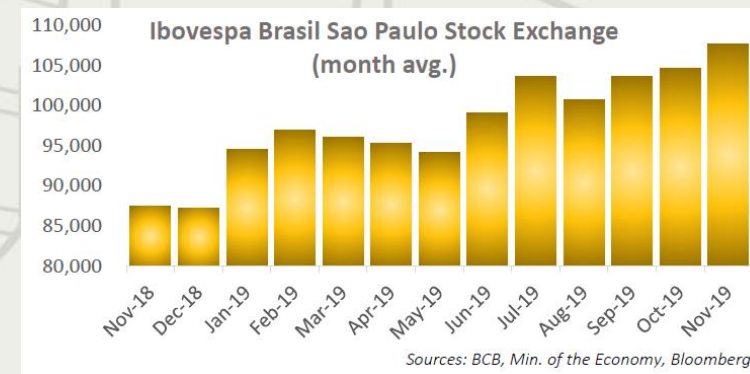
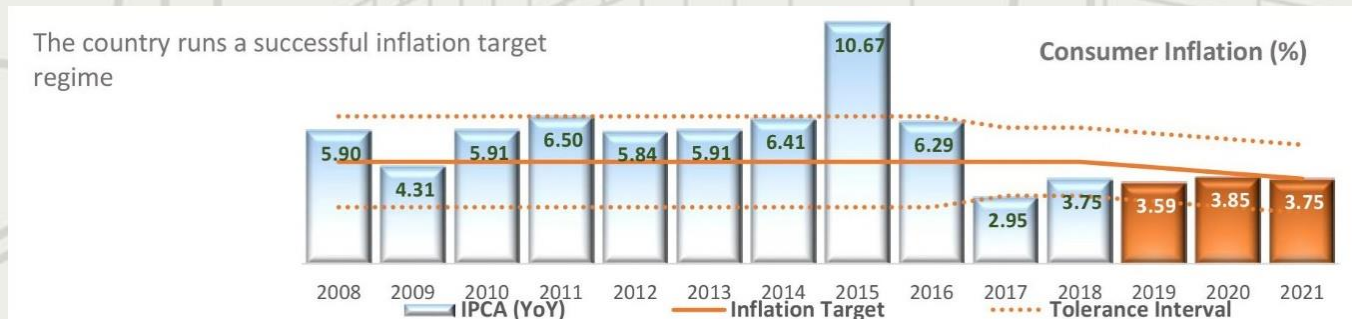
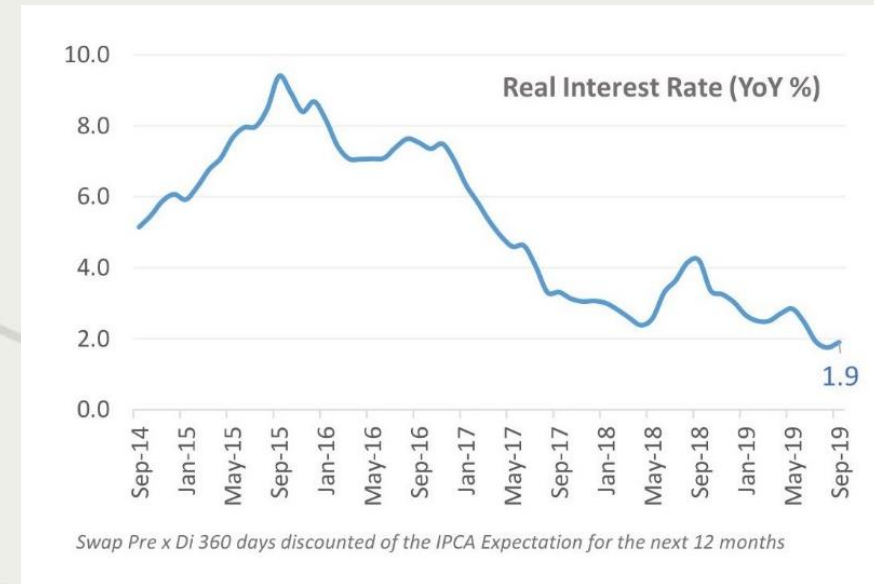
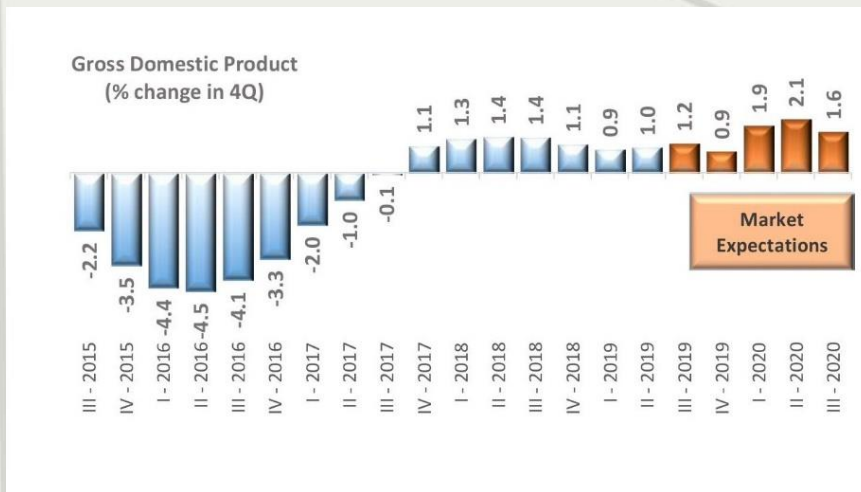
*Streamlining civil service to bring about more efficiency*

## ***Infrastructure Reform***

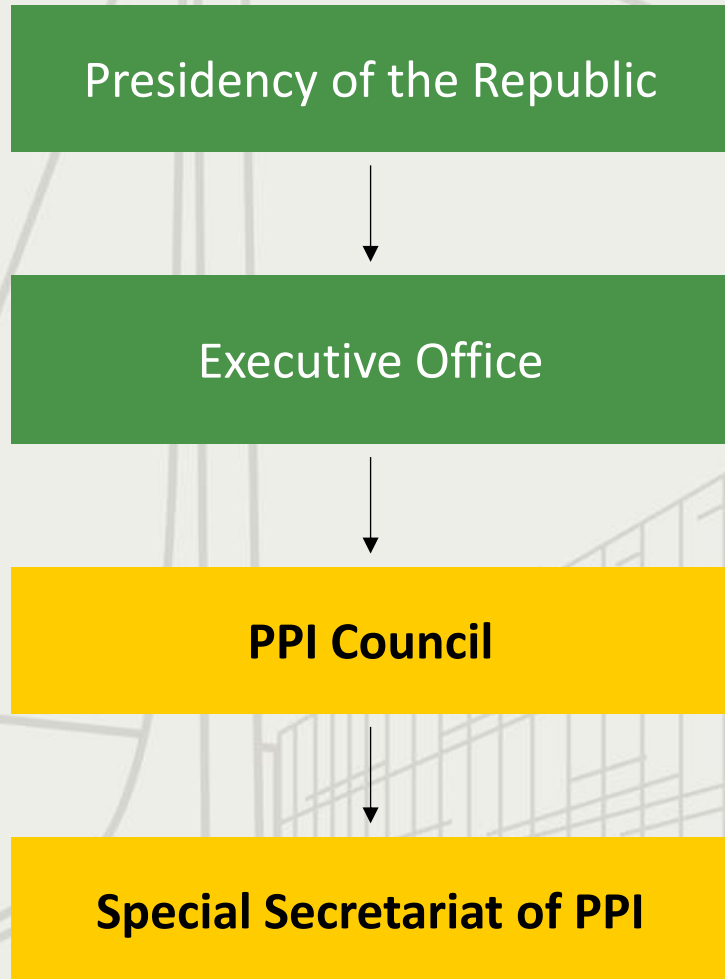
*Legal certainty, transparency and predictability for domestic and foreign investors*

# Brazil's Economic Recovery

Ministry of Economy/Brazilian Central Bank data



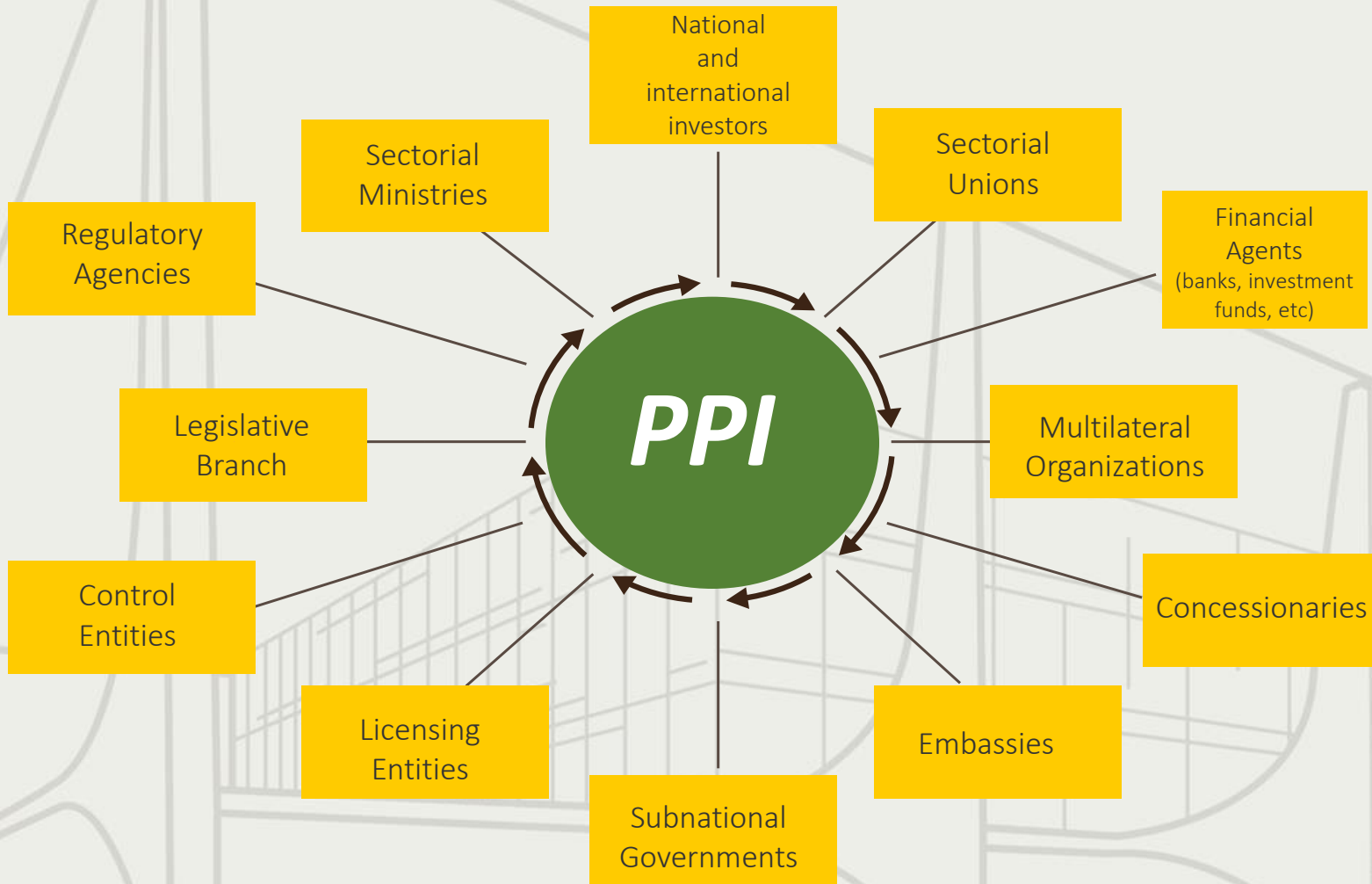
# PPI Council



- President and Ministers:
  - Executive Office
  - Economy
  - Infrastructure
  - Mines and Energy
  - Environment
  - Secretariat of Government
  - Regional Development
- Federal Banks:
  - BNDES
  - Caixa Econômica Federal
  - Banco do Brasil
- The PPI Special Secretary serves as the Executive Secretary of the CPPI



## *PPI Works as a hub*



*Adds on efficiency and value to the process*

- Governance, coordination, monitoring and oversight
- Transparency, dialogue, credibility and predictability
- Well-designed projects
- Technical and legal framework enhancement

# PPI in figures

*Accomplished auctions/bids and projects*

Qualified  
projects

**292**

Accomplished  
auctions/bids  
and projects

**160**

Investments

**R\$ 695.3 billion**  
*(USD 170 billion)*

Concession  
fees/Bonuses

**R\$ 137.1 billion**  
*(USD 33.5 billion)*

# PPI in the world

Out of the 160 accomplished projects, 69 had foreign winning companies or in consortium with Brazilian companies.

*Brazil  
China  
France  
Spain*

*Italy  
Norway  
Qatar  
Switzerland*

*Portugal  
Australia  
India  
Germany  
Malaysia*

*USA  
United Kingdom  
Bermudas  
Colombia  
Canada*





CASA CIVIL  
PROGRAMA DE  
PARCERIAS DE  
INVESTIMENTOS **PPI**

# PPI 2019 – MAIN ACHIEVEMENTS



# *35 auctions have been carried out in 2019*

Investment  
Expectations

**USD 105.5 bi**

Concession  
fees/Bonuses

**USD 21.6**

# 35 auctions carried out in 2019



## Ports

13 auctions

11 Terminals of liquid bulk

- 3 in Cabedelo/PB (Auction on 3/22)
- 1 in Vitória/ES (Auction on 3/22)
- 1 in Belém/PA (Auction on 4/5)
- 1 in Vila do Conde/PA (Auction on 4/5)
- 1 in Santos/SP (Auction on 8/3)

1 Terminal of paper pulp in Paranaguá/PR (Auction on 8/3)

1 Terminal of Solid Bulk in Santos/SP (Auction on 8/3)

**Investments: US\$ 257 million**

**Concession Fee: US\$ 199 million**



## Mining

1 auction

Palmeirópolis (Auction on 10/21)

**Investments: US\$ 62.3 million**

**Concession Fee: US\$ 3.67 million**



## Lotex

1 auction (10/22)

**Concession Fee: US\$ 200 million**



## Oil and Gas

4 auctions

Regular Offer (Auction on 9/10)

**Bonus: US\$ 5.37 million**

Round 16 under the concession agreement (Auction 10/10)

**Bonus: US\$ 2.2 billion**

Petrobras Transfer of Rights (Auction 11/6)

**Bonus: US\$ 17.10 billion**

Round 6 under the PSA (Auction 11/7)

**Bonus: US\$ 1.23 billion**

**Total Investments: US\$ 102 billion**



## Railway

1 auction

North-South Railway (FNS) (Auction 3/18)

**Investments: US\$ 665 million**

**Concession Fee: US\$ 665 million**



## Energy

2 auctions

Generation on New Energy A-4 (Auction 6/28)

Generation on New Energy A-6 (Auction 10/18)

**Investments: US\$ 3.19 billion**

**Auction fee: (lower power tariff)**



## Highway

1 auction

BR-364/365/GO/MG (Auction 9/10)

**Investments: US\$ 500 million**

**Concession fee: lower toll fee (33% discount)**



## Airports

12 assets

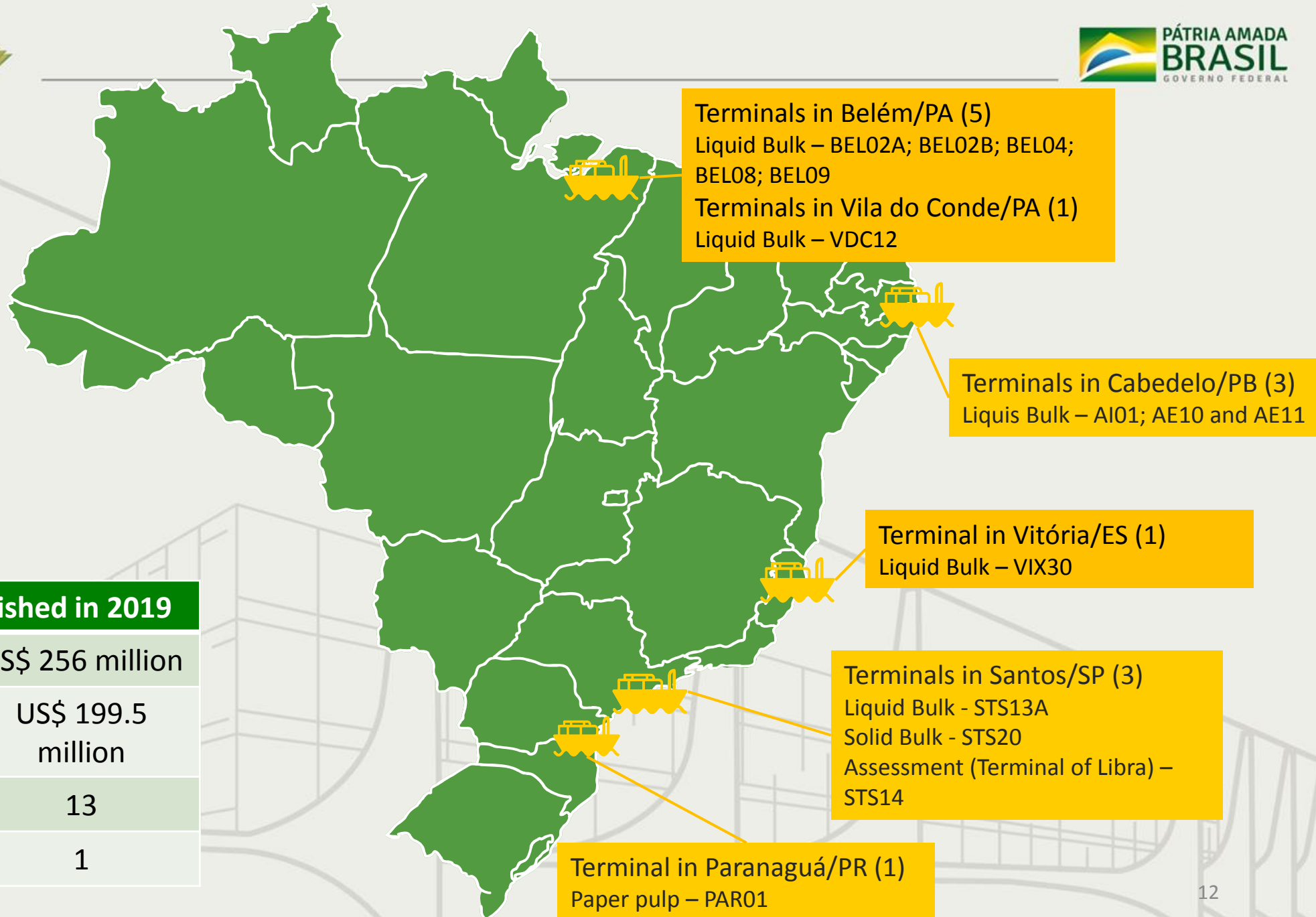
12 airports in 3 clusters (Auction 3/15):

- Northeast:
  - Recife/PE; João Pessoa, Campina Grande/PB; Maceió/AL; Aracaju/SE; and Juazeiro do Norte/CE
- Midwest:
  - All in MT: Várzea Grande (Cuiabá), Alta Floresta, Barra do Garças, Rondonópolis and Sinop.
- Southeast:
  - Vitória/ES and Macaé/RJ

**Investments: US\$ 860 million**

**Concession fee: US\$ 582 million**

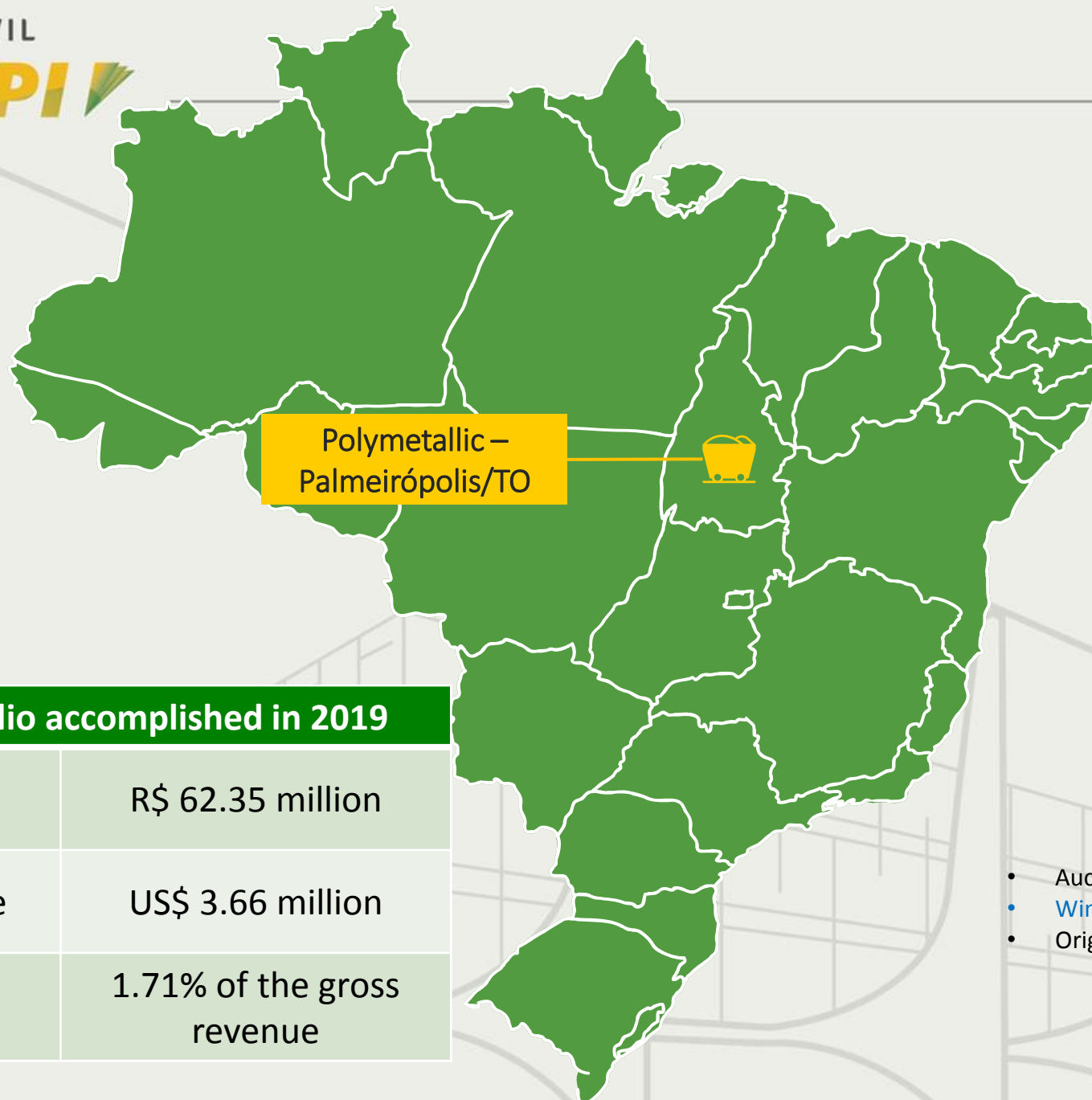
# Ports



## Port portfolio accomplished in 2019

Investment	US\$ 256 million
Concession Fee	US\$ 199.5 million
Leasings	13
Assessment	1

# Mining



1st auction on CPRM Mining Rights in the last 40 years

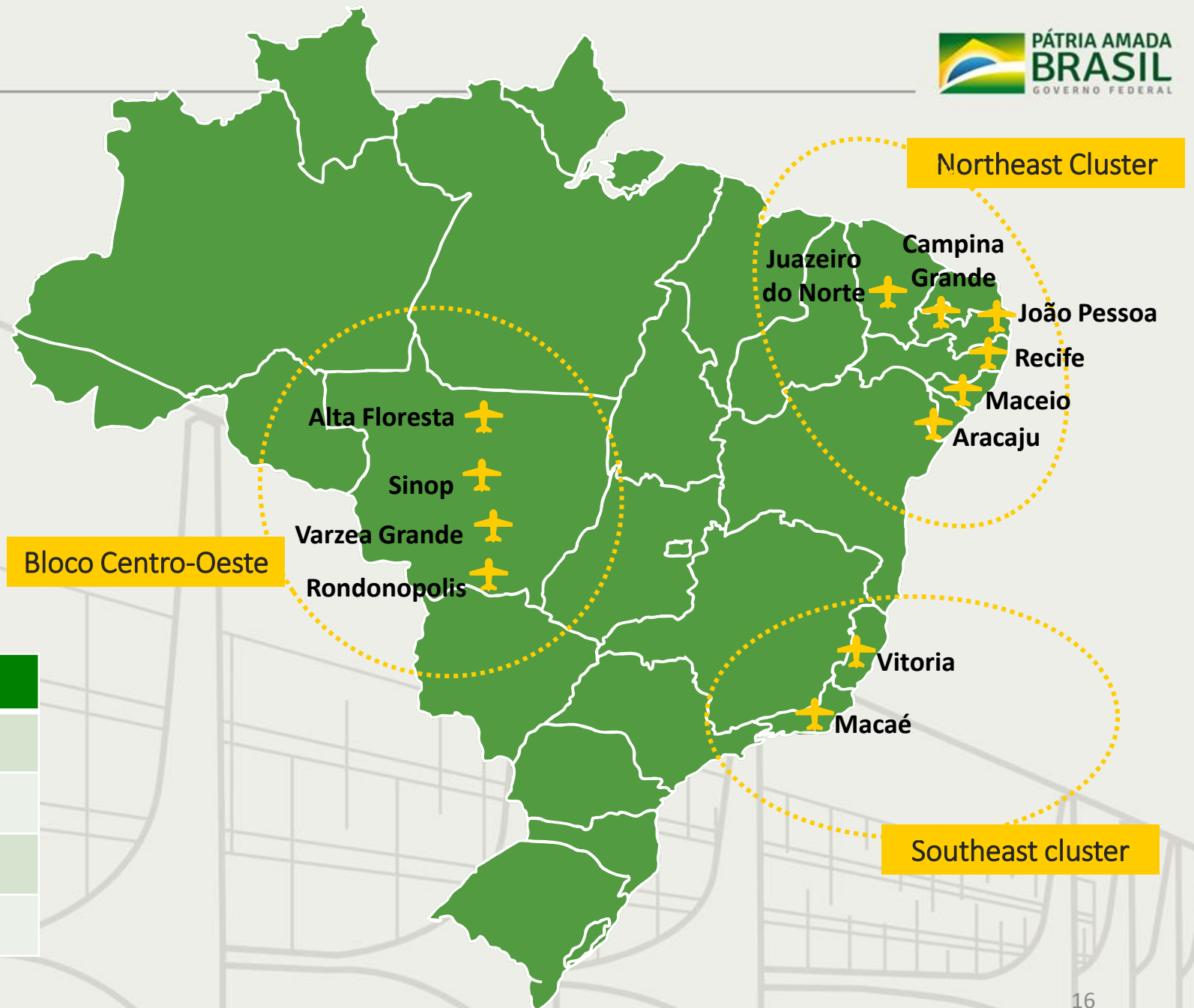
+ 29 CPRM projects, with spotted deposits, with potential to go on auction.

## Mining portfolio accomplished in 2019

Investments	R\$ 62.35 million
Concession Fee	US\$ 3.66 million
Royalties	1.71% of the gross revenue

- Auction: Oct 21, 2019
- Winner: [Perth Recursos Mineraiis Ltda.](#)
- Origin: Australia

# Airports



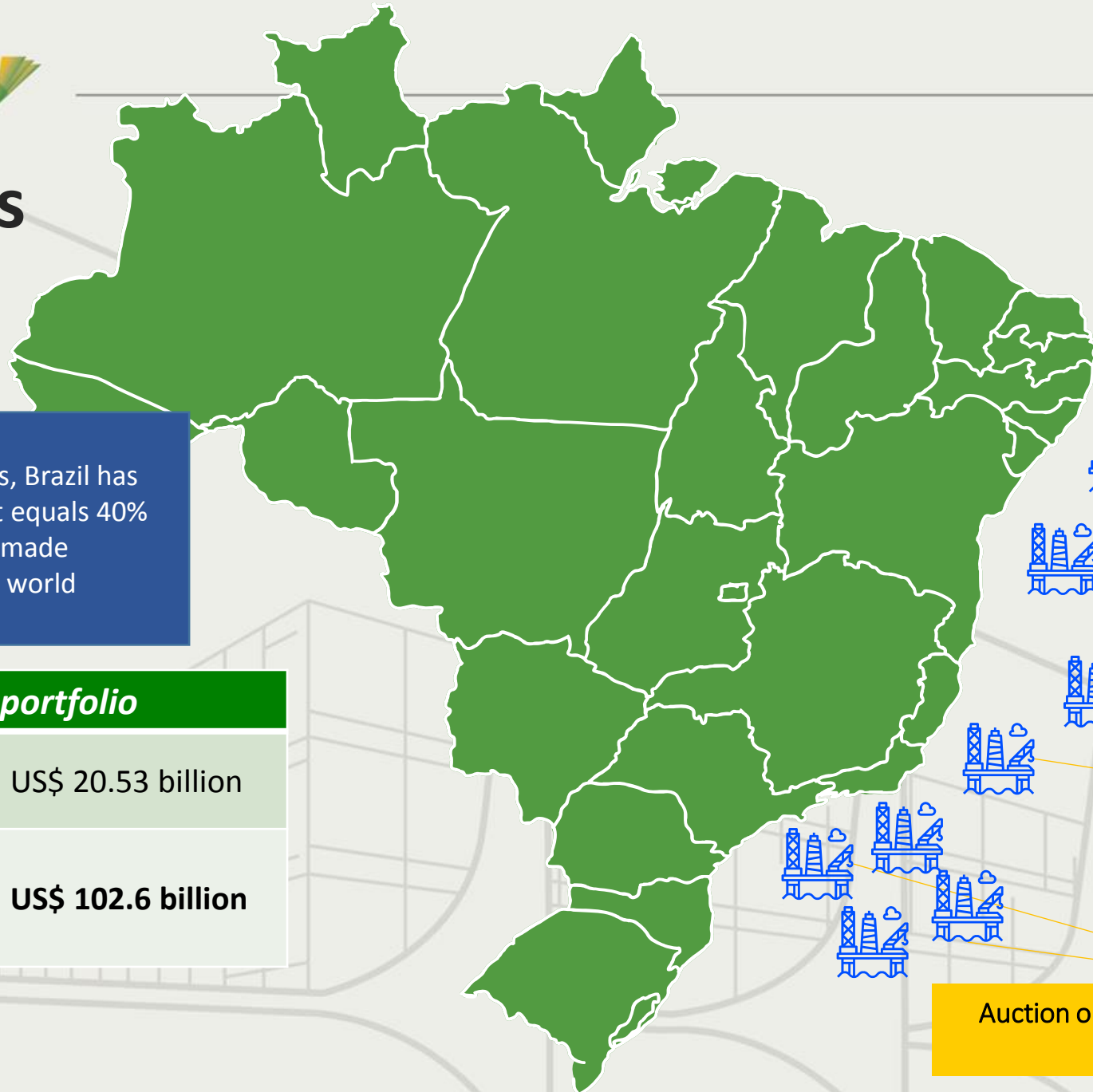
## Airport Portfolio accomplished in 2019

Investment	US\$ 860 million
Concession Fee	R\$ 582 million
Airports	12
Auction	March 15, 2019

# Oil and Gas

In 2019, in signing bonus, Brazil has obtained an amount that equals 40% of all investments made in the sector in the world

<b>Oil and Gas portfolio</b>	
Signing Bonus + Regular Offer	US\$ 20.53 billion
Expected Investments (35 years)	US\$ 102.6 billion



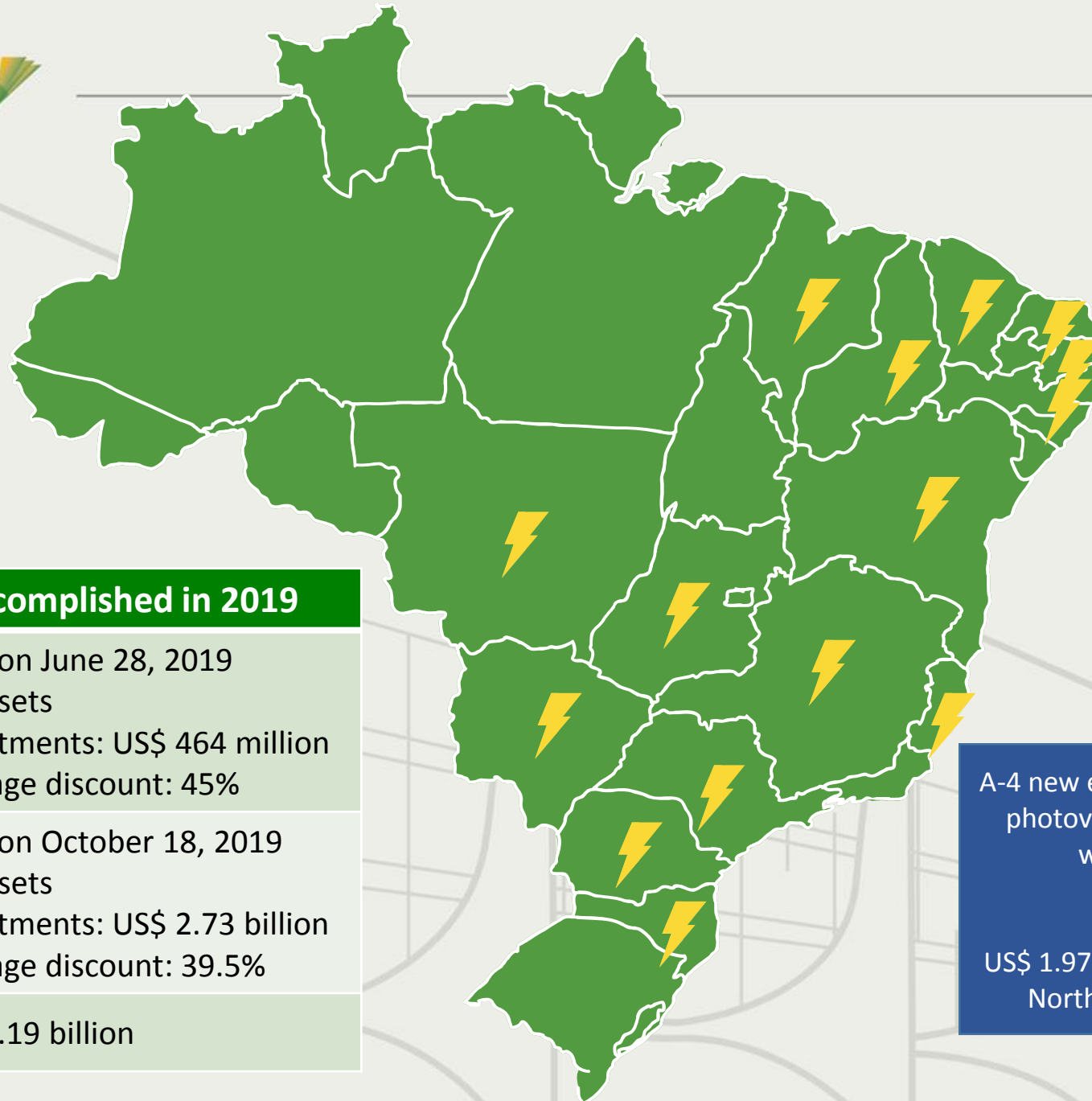
Regular offer  
**45 blocks sold**

Round 16 under the concession agreement  
**12 blocks sold**

Round 6 of PSA  
**1 block sold**

Auction on Petrobras Additional Transfer of Rights  
**2 areas sold**

# Energy



## Energy portfolio accomplished in 2019

Auction A-4	<ul style="list-style-type: none"> <li>• Auction June 28, 2019</li> <li>• 15 assets</li> <li>• Investments: US\$ 464 million</li> <li>• Average discount: 45%</li> </ul>
Auction A-6	<ul style="list-style-type: none"> <li>• Auction October 18, 2019</li> <li>• 91 assets</li> <li>• Investments: US\$ 2.73 billion</li> <li>• Average discount: 39.5%</li> </ul>
Investments	<ul style="list-style-type: none"> <li>• US\$3.19 billion</li> </ul>

A-4 new energy auction: lower tariff in photovoltaic energy offered in the world(US\$ 16.5 MWh)

US\$ 1.97 billion in investments in the Northeast (Auctions A-4 e A-6)



Source	Auction	Number of assets	Investments (R\$ Million)	Discount
Wind power	A-4	3	532,2	-61,5%
	A-6	44	4.547,8	-47,76%
	<b>Subtotal</b>	<b>47</b>	<b>5.080,0</b>	
Hydro power	A-4	5	454,3	-30,9%
	A-6	27	1.701,7	-20,59%
	<b>Subtotal</b>	<b>32</b>	<b>2.156,0</b>	
Photovoltaic	A-4	6	856,2	-75,9%
	A-6	11	2.143,5	-59,63%
	<b>Subtotal</b>	<b>17</b>	<b>2.999,7</b>	
Thermal power – gas, biodiesel and biomass	A-4	1	50,0	-42,0
	A-6	9	2.828,4	-35,48%
	<b>Subtotal</b>	<b>10</b>	<b>2.878,4</b>	
<b>Total</b>		<b>106</b>	<b>13.114,1</b>	

ENERGIA FOTOVOLTAICA  
(R\$ 67,48 MWh)

# Railway

The North-South Railroad is the backbone of the Brazilian transportation system, which allows the Southeast to connect with the North and the Northeast.

The concession of the railroad mid section has been the 1st in this transportation mode in the last 12 years.



**Norte-Sul**  
 Porto Nacional/TO to  
 Estrela D'Oeste/SP  
 1537 km

Port of Itaqui

Port of Santos

## Railway portfolio accomplished in 2019

Investments	US\$ 665 million
Concession fee	<ul style="list-style-type: none"> <li>Expected: US\$ 330 million</li> <li>Effective revenue: US\$ 682 million</li> <li>Surplus: 100.92%</li> </ul>
Bidders/ Winner	1- VLI Multimodal 2 – Rumo S.A.
Auction	March 28, 2019

# Highway

## Highway portfolio accomplished in 2019

Investments	US\$ 503 million
Opex	US\$ 613 million
Bidders/Winner	<p><b>1- Ecorodovias concessões e serviços S.A;</b></p> <p>2 - Silva &amp; Bertoli empreendimentos e Participações Societárias</p> <p>3- Consórcio Way - 364/365VLI Multimodal</p>
Auction	September 27, 2019
Auction Criterion (lower toll fee)	<ul style="list-style-type: none"> <li>• Cap in the toll fee (bidding notice): US\$ 1.71</li> <li>• Winner toll fee: US\$ 1.14</li> <li>• <b>Reduction: 33,14%</b></li> </ul>



# LOTEX – Scratch Lottery

Concession fee	US\$ 199.75 million
Bidder and Winner	<p>Consortium Estrela (IGT / SGI)</p> <ul style="list-style-type: none"><li>• International Game Technology (IGT) – Italy</li><li>• Scientific Games International (SGI) – United States</li></ul>
Auction	October 22, 2019



CASA CIVIL  
PROGRAMA DE  
PARCERIAS DE  
INVESTIMENTOS **PPI**

# Current PPI portfolio



# PPI project portfolio after CPPI 11<sup>th</sup> meeting (Nov 19)

## Railways – 11



5 concession renewals  
2 new concessions  
4 investments in strategic railway networks

## Airports – 22



22 airports in 3 clusters

## Highways – 19



10 Concessions  
2 Feasibility assessments (11,350 km)  
7 Licensings

## Ports – 23



2 Privatizations  
20 Port Terminals:  
17 leasings  
2 investment authorizations  
1 assessment (Santos)  
Waterway:  
1 Licensing

## Defense and Security (PPP's) - 2

1 Air force Communications  
1 Police Communications

## Economy – 5



5 Privatizations (Casa da Moeda, ABGF and EMGEA, Serpro and Dataprev)

## Energy – 24



12 Transmission Lots  
2 Privatizations (Eletrobras and Nuclep)  
7 Licensings  
1 Partnership - Angra 3  
2 Generation assets (A-4 e A-5)

## Mining – 4



4 Mining Rights

## Regional Development – 4

2 privatizations (CBTU and Trensurb)  
2 assessments (PISF and Irecê)

## Supply – 2



2 Privatizations (CEASAMINAS and CEAGESP)

## National Parks – 4

4 concessions (Lençóis Maranhenses, Iguazu Waterfalls, Jericoacoara and Aparados da Serra)

## Communications and Technology – 5

4 Assessments for Privatization (Telebras, ECT, Ceitec e EBC)  
1 concession (5G)

## Oil and Gas – 1



Round 17 of concessions

## Policies:

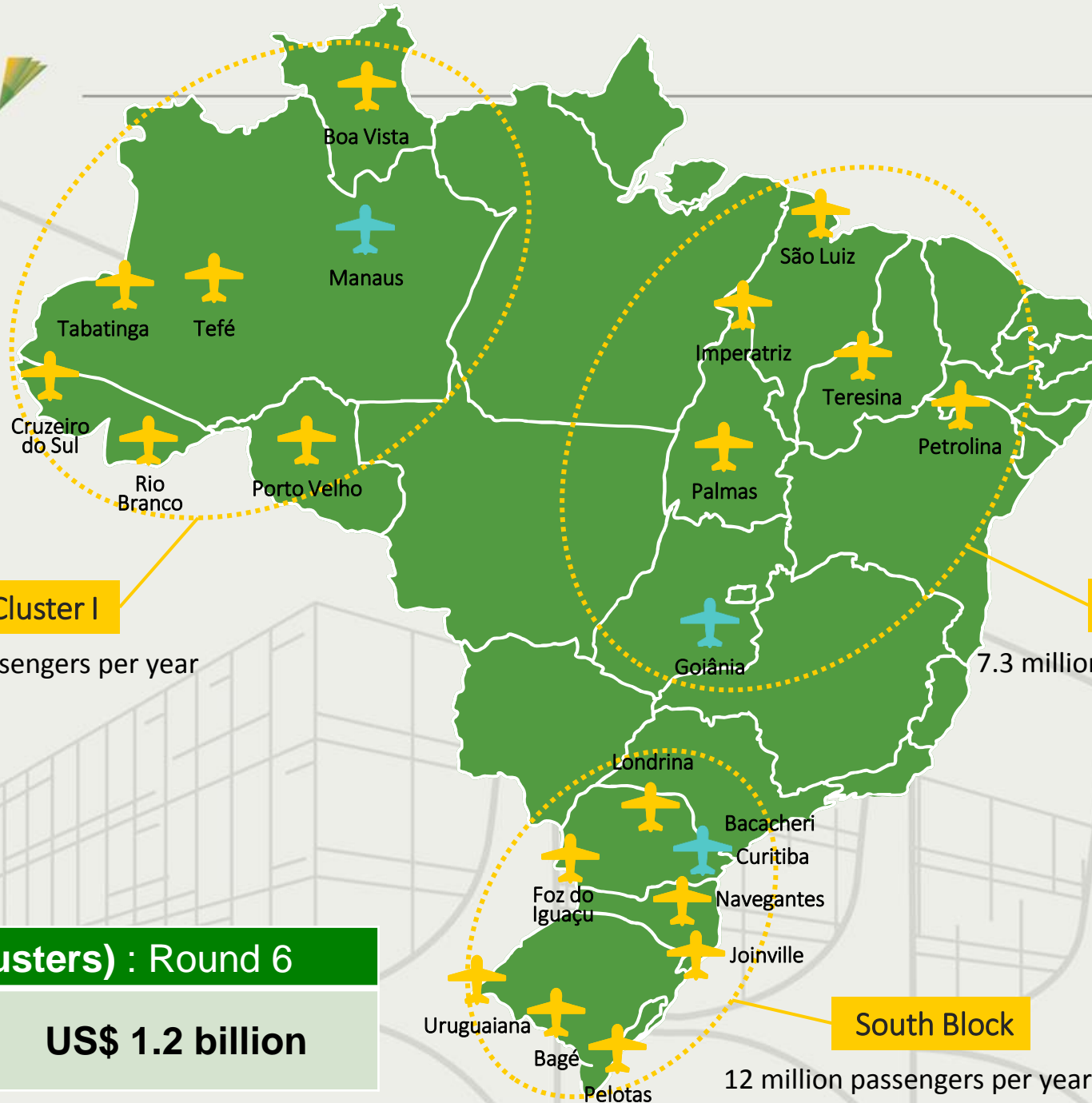
- “Sea road” - Cabotage
- TRIIP
- PPP daycares
- PPP prisons + correctional facilities
- Universalizing basic sanitation + solid waste
- PPP street lightening
- The “projects factory”
- UBS (health basic units)
- BidSim

## Health – 2

1 Assessment (Hospital Fêmina/Porto Alegre)

**129 + 11**  
**projects Policies**

# Airports



**North Cluster I**

4.4 million passengers per year

**Central Block**

7.3 million passengers per year

**South Block**

12 million passengers per year

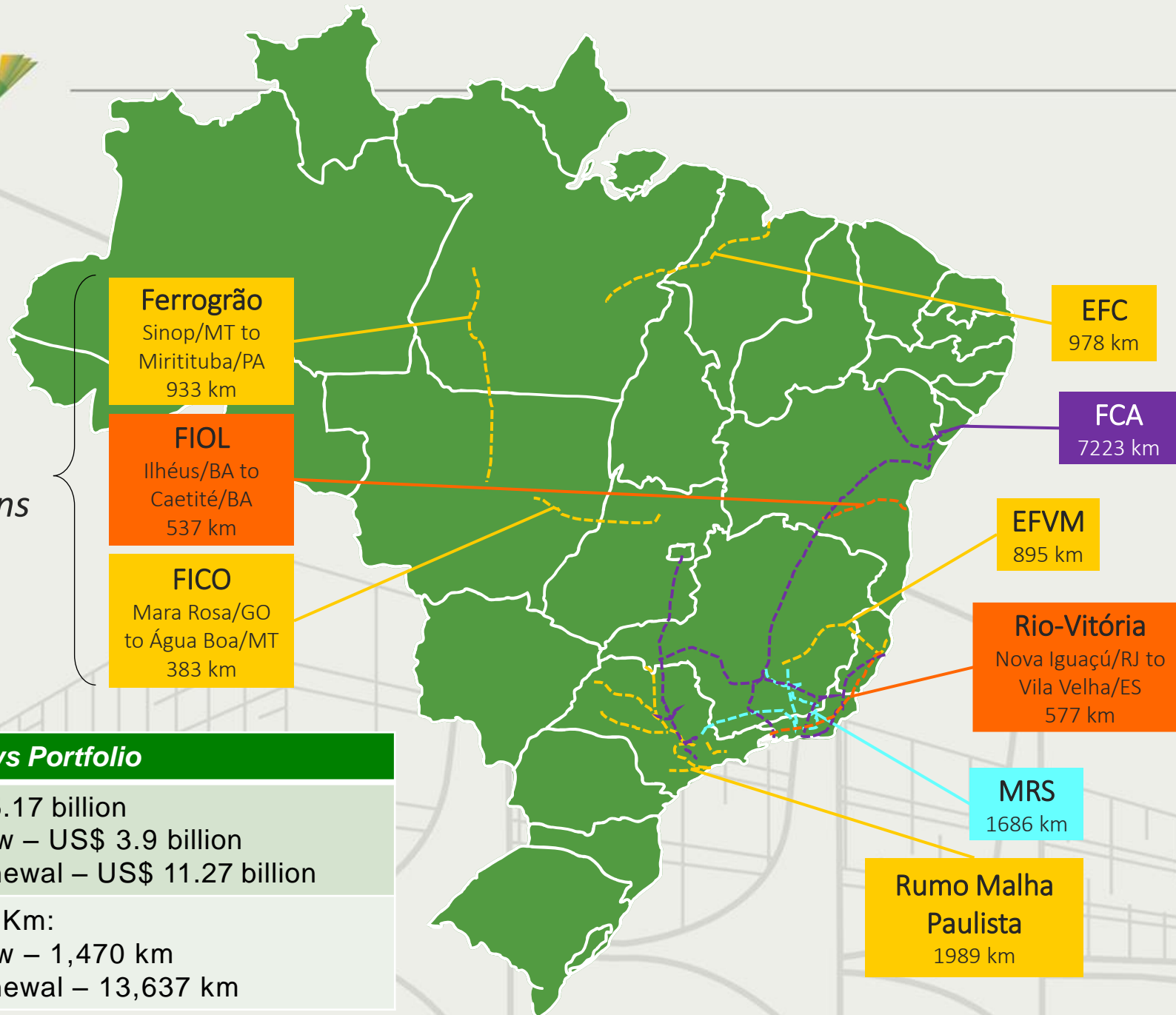
**22 Airports (3 clusters) : Round 6**

Investments

**US\$ 1.2 billion**

# Railways

*New  
concessions*



**Ferrogrão**  
Sinop/MT to  
Miritituba/PA  
933 km

**FIOF**  
Ilhéus/BA to  
Caetité/BA  
537 km

**FICO**  
Mara Rosa/GO  
to Água Boa/MT  
383 km

**EFC**  
978 km

**FCA**  
7223 km

**EFVM**  
895 km

**Rio-Vitória**  
Nova Iguaçu/RJ to  
Vila Velha/ES  
577 km

**MRS**  
1686 km

**Rumo Malha  
Paulista**  
1989 km

## Railways Portfolio

Investments	US\$ 15.17 billion • new – US\$ 3.9 billion • renewal – US\$ 11.27 billion
Total Length	15,107 Km: • new – 1,470 km • renewal – 13,637 km



# Railways



- **Ferrogrão – Grain Railway – EF-170/MT/PA**

*Section between Sinop/MT and Miritituba/PA*

- Length: 933 km, plus the sections of Santarenzinho (32 km) and Itapacurá (11 km)
- New railway corridor to export grains through the North region, which aims at improving the outflow of the Midwest agribusiness output by connecting it to the port of Miritituba, in the state of Pará.
- Estimated cargo: 38.3 million tons in 2030 and 46.8 million tons in 2050
- **Estimated investment : US\$ 3.1 billion**
- IRR: 11.04%

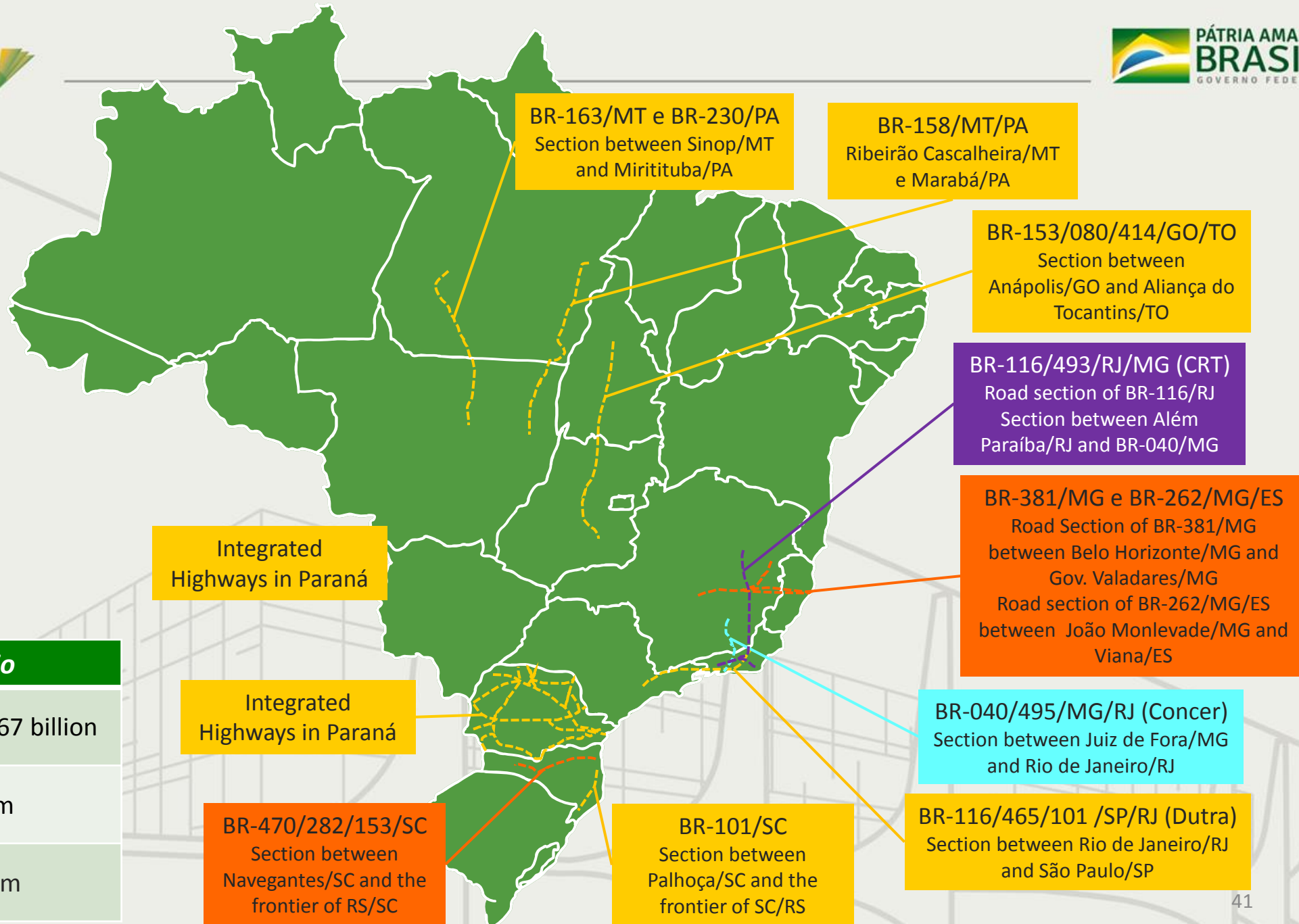
- **West-East Integration Railway (FIOL)**

*Section between Ilhéus/BA and Caetité/BA*

- Length: 537 km
- It will allow the iron ore produced in the Caetité/BA region and the grain output of the West of Bahia to be exported through the South Port, a port complex to be built close to the city of Ilhéus/BA. In the future, it is also possible to establish a connection between the South Port and the North-South Railway (FNS).
- Estimated cargo: 11.8 million tons in 2023 and 15.8 million tons in 2053
- **Estimated investment: US\$ 805 million**, out of which US\$ 390 million are earmarked to accomplish the works
- IRR: 11.04%

# Highways

**17.168 km**



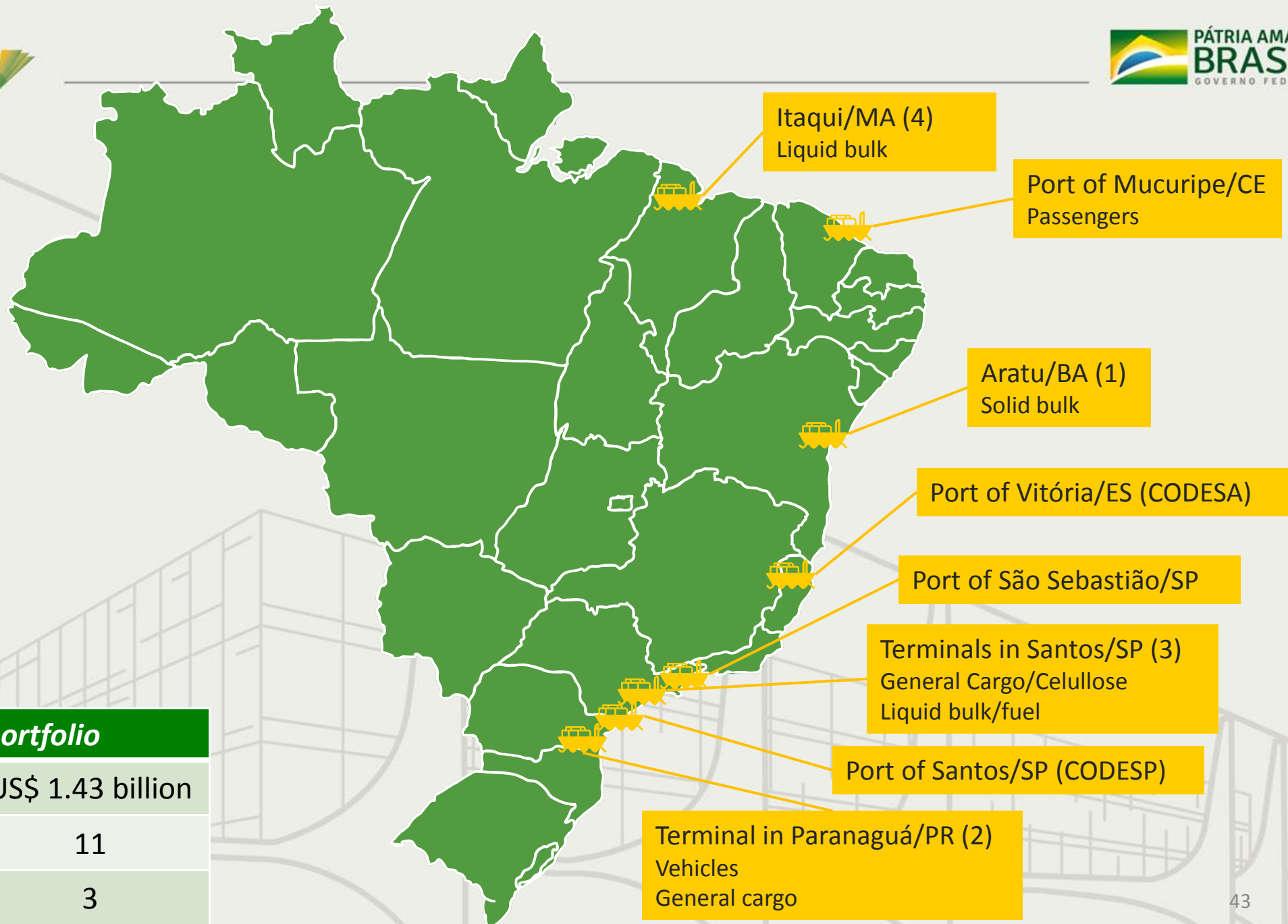
Highways Portfolio	
Investment	US\$ 34.67 billion
Concessions	4,785 km
Assessments	12,420km

# Highways

Highway	Length	Capex (US\$)	Auction
BR-101/SC • Road section from Palhoça /SC to the frontier of SC/RS	220 km	709 million	2020/Q1
BR-153/080/414/GO/TO • Road section from Anápolis/GO to Aliança do Tocantins/TO	850 km	1.85 billion	2020/Q3
BR-381/MG e BR-262/MG/ES • Road section of BR-381/MG from Belo Horizonte/MG to Gov. Valadares/MG • Road section of BR-262/MG/ES from João Monlevade/MG to Viana/ES	672 km	2.2 billion	2020/Q3
BR-163/MT e BR-230/PA • Road section from Sinop/MT to Miritituba/PA	970 km	413 million	2020/Q3
BR-116/465/101 /SP/RJ (Dutra) • Road section from Rio de Janeiro/RJ to São Paulo/SP	635 km	2.7 billion	2020/Q4
BR-040/495/MG/RJ (Concer) • Road section from Juiz de Fora/MG to Rio de Janeiro/RJ	211 km	636 million	2020/Q4

→ *New Modelling: lower toll fee (limited discount) + higher concession fee as a tiebreaker*

# Ports



<b>Ongoing Ports portfolio</b>	
<b>Investments</b>	US\$ 1.43 billion
Port leaseings	11
Port privatizations	3

# Projects for Privatizing Public Ports

## *Port of Santos/SP (CODESP)*

Current stage: Planning

Assessments delivery and approval:

2020/Q4

Public Hearing: 2021/Q1

Investments: US\$ 366.7 million



## *Port of Vitória/ES (CODESA)*

Current stage: Assessments

Bidding Notice: 2020/Q4

Auction: 2021/Q1

Investments: US\$ 244.5 million



## *Port of São Sebastião/SP*

Current stage: Planning

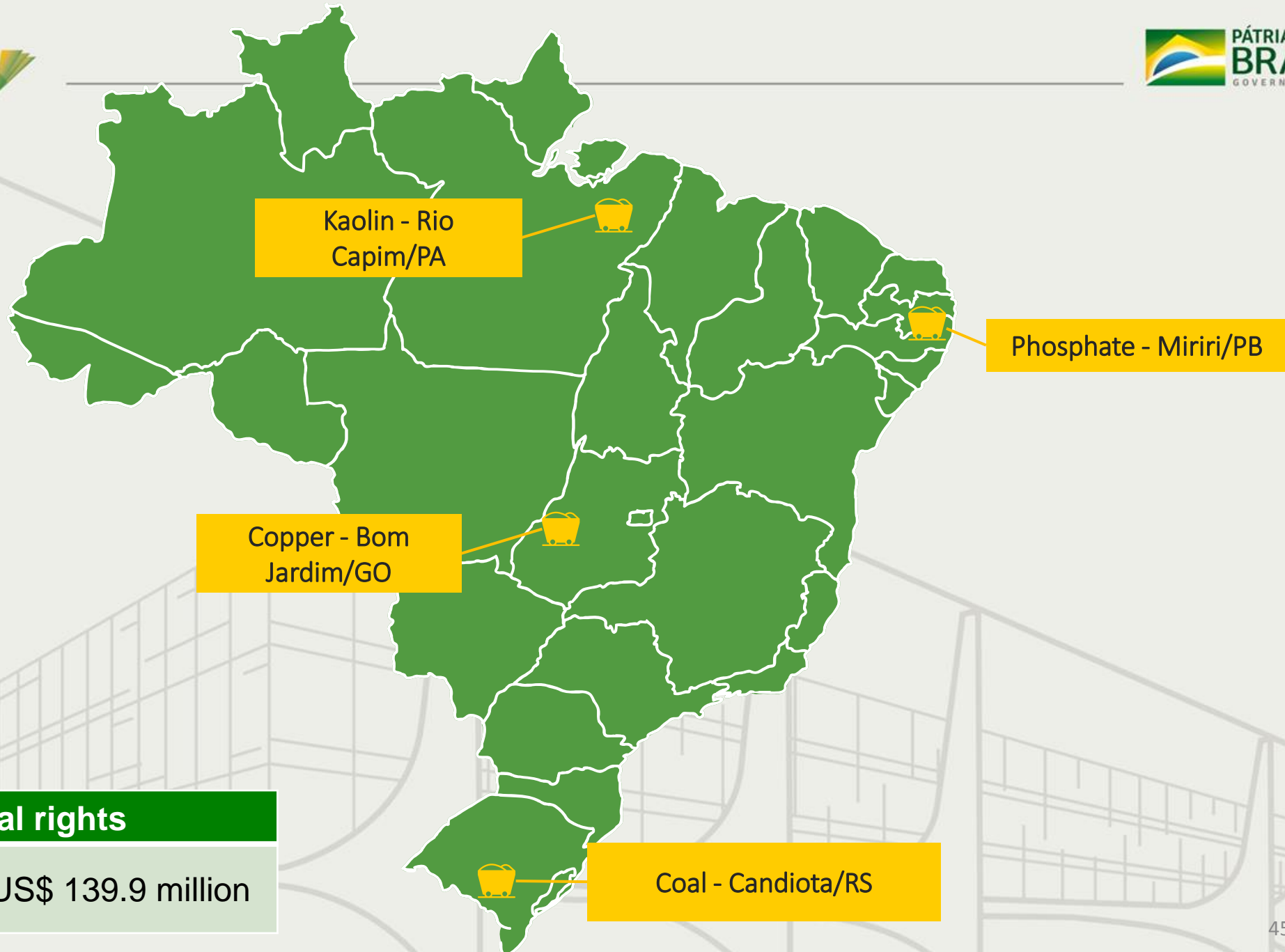
Bidding Notice: 2021/Q1

Auction: 2021/Q2

Investments: US\$ 140.6 million



# Mining

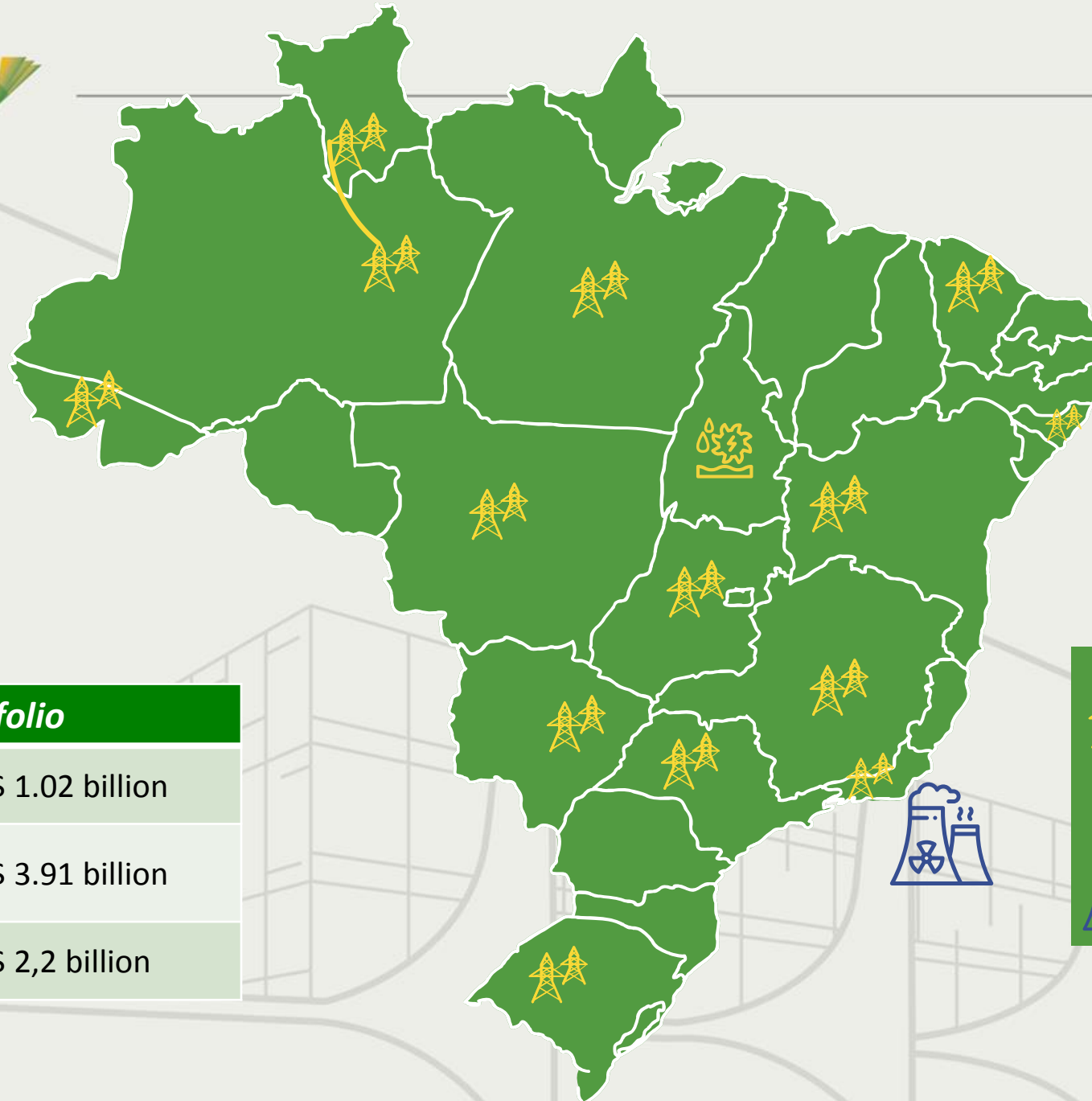


## Mining legal rights

Investments




US\$ 139.9 million

# Energy



## Energy portfolio

Transmission	US\$ 1.02 billion
Partnership to accomplish Angra 3	US\$ 3.91 billion
Generation	US\$ 2,2 billion

-  Auction on 12 Transmission Lines
-  Small-scale hydropower plant Agro Trafo
-  Angra 3

# Angra 3 Thermonuclear Power Generation

## Basic features:

- Site: Angra dos Reis/RJ
- 67.1% of civil works have been accomplished
- Expected investments for accomplishing the works: US\$ 3.91 billion
- Current stage: The Resolution which has qualified Angra 3 in PPI has established an Interministerial Committee through the Decree 9915/2019 to assess the most economically feasible model for the Plant. The Terms of Reference draft for hiring those assessments is in progress.





# ELETOBRAS - Brazilian Power SOE

- A bill will be sent to Congress to set up the guidelines for the privatization.
- Privatization model: Increasing social equity by issuing common shares
- Assigned body to coordinate assessments: BNDES

## Some data about the company

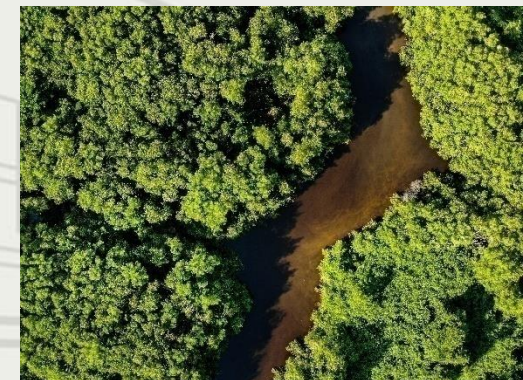
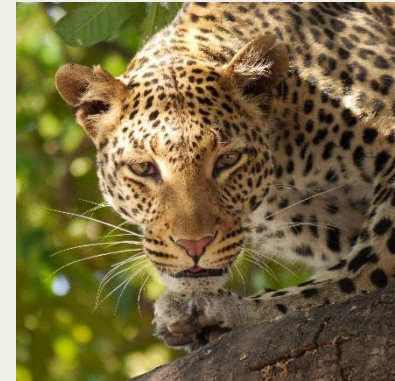
- Power generation capacity: 46,856 GW
- Generators (total): 233 units, out of which:
  - Hydropower plants : 47 units
  - Thermoelectric plants: 114 units
  - Wind power plants: 69 units
  - Solar power plant: 1 unit
- Transmission Lines: 70,201 Km
- Current Federal Government shareholding: 51% of common shares (with voting rights)
- Federal Government participation in the total equity (common shares + preference stocks) : 40.98%



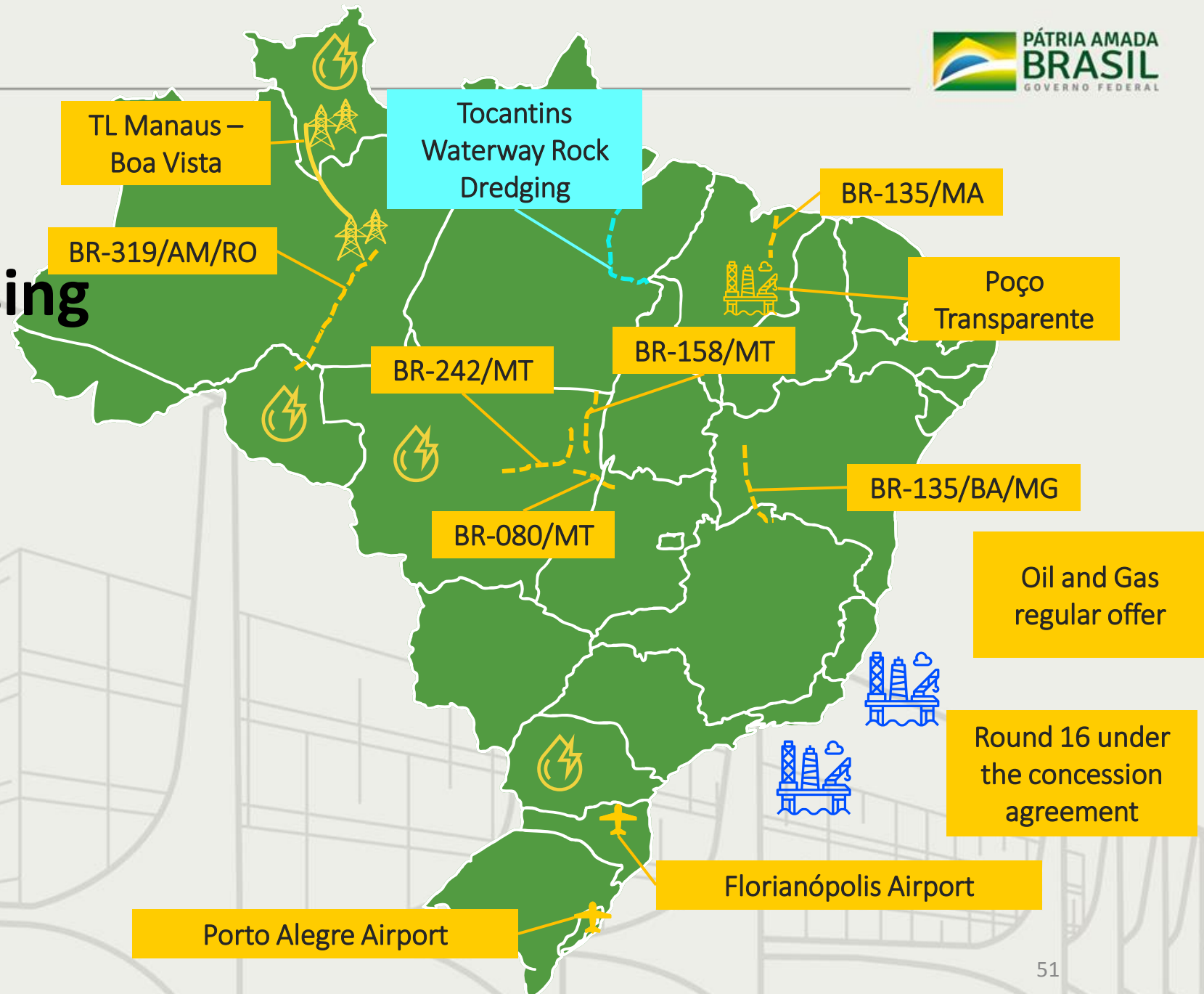


# Environmental Licensing

- Brazil is the most biodiverse country on Earth and that implies a major responsibility.
- It counts upon a strong legal framework, which comprises a specific chapter about environmental licensing enshrined in the 1988 Federal Constitution.
- Even before the Constitution, Brazil had already established an Environment National Policy (1981), which is still in force.
- The main purpose of the policy is making social, economic development compatible with preserving environment quality and ecological balance.
- Environmental licensing is a core tool to control and is required for carrying out any activity deploying environmental resources, that, effectively or potentially, bring about environmental degradation



# Supporting environmental licensing and expropriation



**Hydropower Plants**

- Castanheira – MT
- Telêmaco Borba – PR
- Tabajara – RO
- Bem Querer – RR
- UHE Formoso - MG

# National Parks

National Park of  
Lençóis Maranhenses (MA)



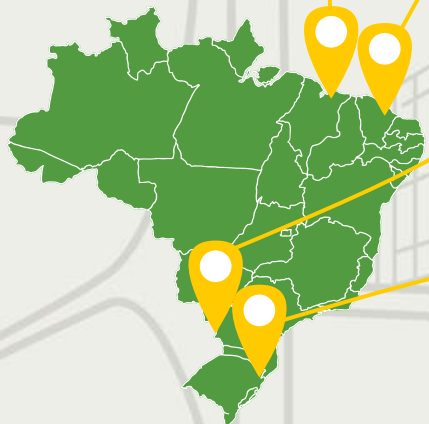
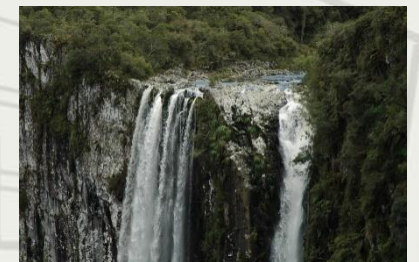
National Park of  
Jericoacoara (CE)



National Park of  
Iguazu Waterfalls (PR)



National Park of  
Aparados da Serra (RS)



# Irrigation Perimeter in the lower lands of Irecê/BA: Assessments for proposing alternatives for partnerships for developing and improving management

- Started works: 2 stages in operation, out of 9;
- Project surface: 47,924 hectares for irrigation
- Entitled municipalities: Xique-Xique and Itaguaçu da Bahia, where 58,000 people live – Central Region of the state of Bahia –River São Francisco Basin
- Project designed for exploiting irrigated agriculture, based upon tropical fruit crop and grain output (soybean, corn and beans)
- Potential for producing 16,000 tons of fruit and 83,000 tons of grains per year, only in stages 1 and 2
- Employment generation: 120,000 direct and indirect employments (9 stages)
- Estimated Annual Gross Production Value (VBP): US\$ 122 million/year
- Investments already made: US\$ 244 million (Pumping station of 10.5 M3/s and 42 KM of canals, among others)
- Goals: - Accomplishing infrastructure works (canals and water pumping stations) in stages 2 to 9, and operating and maintaining the Infrastructure for shared usage (stages 1 to 9) of the project.
- Management: Adopting a new institutional model for exploiting irrigated perimeters based on greater participation of the private sector in operating and maintaining the infrastructure for shared and exploiting wet and dry areas.



# Auction on 5G technology

## Basic Features of the Project

- Assigned body in charge: ANATEL
- Preliminary investment estimates: US\$ 4.89 billion
- Schedule for bidding notice and auction: 2020 / Half 2
- Criteria for the auction in 3 stages:
  - 1st stage – ordinary auction
  - 2nd stage – comparison for selection
  - 3rd stage – combined auction on several rounds
- Contract Term: 10 to 15 years (depending on the band)

## General outline of the project

Essential for developing internet of things (IoT), industry 4.0, autonomous vehicles, smart cities and precision agriculture.

For there is urgent need for building and/or modernizing the current telecom network infrastructure, with possibility of billionaire investments in the sector.

# Privatizations

*Preliminary estimates: US\$ 12.25 billion*



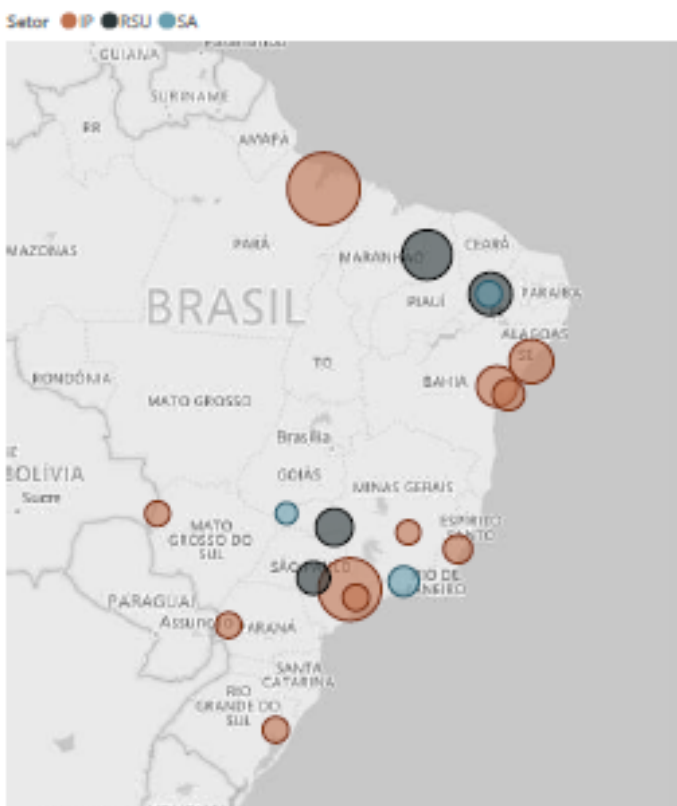
# Assessments





# Projects in municipalities

População Beneficiada por Localização e Setor



Projeto	UF	Setor
IP ARACAJU	SE	IP
IP BELÉM	PA	IP
IP CACHOEIRO DE ITAPEMIRIM	ES	IP
IP CAMAÇARI	BA	IP
IP CAMPINAS	SP	IP
IP CORUMBA	MS	IP
IP FEIRA DE SANTANA	BA	IP
IP FRANCO DA ROCHA	SP	IP
IP NOVA LIMA	MG	IP
IP SAPUCAIA DO SUL	RS	IP
IP TOLEDO	PR	IP
RSU BAURU	SP	RSU
RSU COMARES	CE	RSU
RSU CONVALE	MG	RSU
RSU TERESINA	PI	RSU
SA CRATO	CE	SA
SA SÃO SIMÃO	GO	SA
SA VOLTA REDONDA	RJ	SA

## Supporters:



**Projects**  
18

**Entitled population**  
8 million

**Cities**  
38

**Investments**  
US\$ 392 million

## Sectors to benefit from the project – bidding schedule

Solid Waste Treatment – 2020/Half 1

Basic sanitation – 2021/ Half 2

Street lightening – 2020/ Half 1

Soon there will be new public notices on:

- Waste treatment(Consortia)
- Street lightening (Program “Em frente, Brasil”)

# BNDES Project Factory

*35 Projects in subnational levels – undergoing structuring (nov/19)*

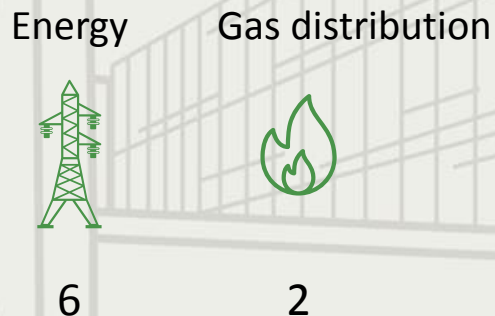
## Concessions and PPPs



**27 subnational projects**  
**Estimated Capex de R\$ 90 bi**

\* Capex estimado para todo o período de concessão.

## Privatizations



**8 SoE undergoing privatization processes**

# Subnational level projects

## *Concessions and PPP's*

Sector	Project
Street lightening (10)	Consortium Centro Sul; Curitiba/PR; Porto Alegre/RS; Pelotas/RS; Vila Velha/ES; Natal/RN; Teresina/PI; Petrolina/PE; Caruaru/PE; Macapá/AP;
Sanitation (9)	Porto Alegre/RS; Rio Grande do Sul; Acre; Amapá; Alagoas; Ceará; Pernambuco; Cariacica/ES; Companhia Estadual de Águas e Esgotos do Rio de Janeiro (CEDAE);
Highways (4)	MG, PE, RJ, RS
Security (3)	Prisons in PR, RS e SC
Health (1)	Hospital of Guarulhos/SP

# Subnational level projects

## *Privatizations/Partnerships*

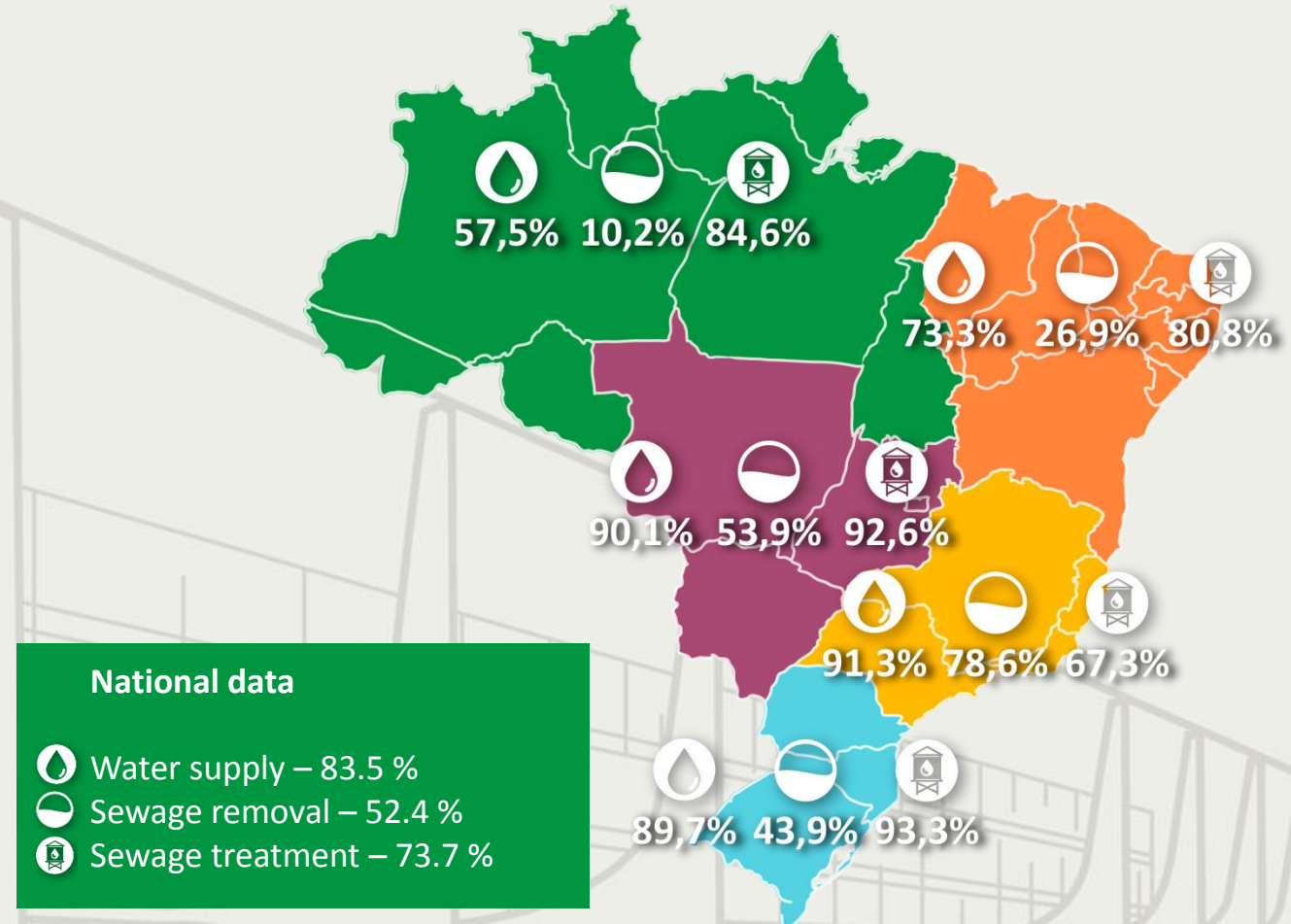
Sector	Project
Energy(6)	Companhia de Eletricidade do Amapá - CEA; Companhia Energética de Brasília (Debêntures) – CEB Debêntures Companhia Energética de Brasília (Desestatização) – CEB Companhia Estadual de Energia Elétrica no Estado do Rio Grande do Sul (Distribuição) – CEEE – D Companhia Estadual de Energia Elétrica no Estado do Rio Grande do Sul (Geração) – CEEE – G Companhia Estadual de Energia Elétrica no Estado do Rio Grande do Sul (Transmissão) – CEEE – D
Gas distribution (2)	Companhia de Gás do Estado do Mato Grosso do Sul (MS Gas); Companhia de Gás do Estado do Rio Grande do Sul (Sulgas);

# The challenge of universalizing basic sanitation

## Goals

- In Brazil, a population similar to Canada's has no access to proper water
- More than 100 million Brazilians have no access to sewage removal and treatment
- Forging partnerships with the private sector and subnational level bodies (an estimate of US\$ 147 to US\$ 171 billion in investments )
- Structuring bankable projects to provide proper services to Brazilians

## Access to basic sanitation



# Supporting Subnational level Partnerships

## *Assessments, Projects Factory and pilot projects*

### • Prisons:

- 3 pilot projects have been singled out for structuring: PR, SC e RS
- MoU signed between BID, BNDES and MJSP to support concessions structuring
- International Workshop on Prison Systems PPPs (November 18 e 19) to exchange good practices and enable drafting the Terms of Reference for hiring assessments
- Private partner is responsible for building, maintaining and operating for up to 35 years, with standards to meet in quality of service, qualifying offer and work for prisoners

### • Correctional Facilities:

- Pilot projects seeking
- Need to review requirements for building and operating units by CONANDA – National Council for Children and Teenagers Rights



# Supporting Subnational Level Partnerships

## *Assessments, Project Factory and Pilot Projects*

- Daycares

- There currently are 830 unaccomplished daycares and 247 paralysed
- PPI, MEC and BNDES are seeking pilot projects
- Assessment on the possibility of earmarking federal resources (FUNDEB and Education Wage) in subnational PPPs
- Private partner is responsible for accomplishing the works, equipping, maintaining and operating up to 35 years, with standards to meet in quality of service



## Assessments for partnerships – Health Basic Units (UBS)

- Primary Health Care is comprehensive and offered in all states in Brazil
- There are 42,893 family health care teams in the 5,475 existing cities in Brazil with an aim to raising that figure to 50,000 teams up to 2023
- Certified UBSs by the Ministry of Health: 32,892
- UBSs undergoing construction or to get it started: 4,273
- Paralysed UBSs or with external signals of paralysis: 3.157





CASA CIVIL  
PROGRAMA DE  
PARCERIAS DE  
INVESTIMENTOS **PPI**

# UPCOMING EVENTS



# PPI upcoming events (2019)

## PPP – Defense

Managing the integrated communications network of COMAER – Air Force Command

Investments: US\$ 376 million  
Concession fee: lowest monthly consideration

Auction on December 9

## Energy



Auction on Transmission (12 lots)

- 2,470 km Transmission Lines
- 7,800 MVA capacity in substations

Investments: at least US\$ 1 billion (transmission)  
Concession fee: lowest power tariff

Auction on December 19

## Railways (concession renewals)



- Latin America Rumo Logistics

Investments: US\$ 1,4 billion  
Concession fee: US\$ 1,4 billion

Addendum in 2019/Q4

# PPI auctions scheduled for 2020

2020 / Half 1

2020 / Half 2

<p>Highway</p> <ul style="list-style-type: none"> <li>BR-101 (SC)</li> </ul>	<p>Mining Rights</p> <ul style="list-style-type: none"> <li>Copper - Bom Jardim de Goiás (GO)</li> </ul>	<p>Highways</p> <ul style="list-style-type: none"> <li>BR-153/080/414 (GO/TO)</li> <li>BR-381/262 (MG/ES)</li> <li>BR-163/230 (MT/PA)</li> <li>BR-116/465/101 (RJ/SP) – President Dutra</li> <li>BR-040/495 (MG/RJ) – Concer</li> </ul>	<p>Airports – Round 6</p> <p>22 airports in 3 clusters</p> <ul style="list-style-type: none"> <li>North 1 Cluster</li> <li>South Cluster</li> <li>Central Cluster</li> </ul>
<p>Port Terminals</p> <ul style="list-style-type: none"> <li>1 in Mucuripe (CE)</li> </ul>	<p>Energy/Generation</p> <ul style="list-style-type: none"> <li>Angra 3 (RJ)</li> <li>Existing Energy A-4 e A-5</li> </ul>	<ul style="list-style-type: none"> <li>Alienação das participações acionárias da INFRAERO</li> </ul>	<ul style="list-style-type: none"> <li>Leilão 5G</li> </ul>
<p>Railway</p> <ul style="list-style-type: none"> <li>FIOL (BA)</li> </ul>	<p>Port Terminals</p> <ul style="list-style-type: none"> <li>4 in the Port of Itaqui/MA</li> <li>2 in the Port of Santos/SP</li> <li>1 in the Port of Suape/PE</li> </ul>	<p>Railway</p> <ul style="list-style-type: none"> <li>Ferrogrão – Grain Railroad(MT/PA)</li> </ul>	<p>Mining Rights</p> <ul style="list-style-type: none"> <li>Coal- Candiota (RS)</li> <li>Phosphate - Miriri (PB)</li> </ul>
		<p>Port Terminals</p> <ul style="list-style-type: none"> <li>1 in the Port of Aratu/BA</li> <li>1 in the Port of Paranaguá/PR</li> </ul>	<p>Privatizations</p> <p>EMGEA; ABGF; Casa da Moeda; Ceagesp; Ceasaminas</p>

CASA CIVIL  
PROGRAMA DE  
PARCERIAS DE  
INVESTIMENTOS **PPI**

# Avanço Legislativo



# Medidas aprovadas no Congresso Nacional em 2019

Lei	Descrição
Emenda Constitucional 103/2019 (PEC 6/2019 - Reforma da Previdência)	Garantia de solvência do Estado brasileiro para atração de investimentos.
Emenda Constitucional 102/2019 (PEC 98/2019 - Cessão Onerosa)	Possibilitou a realização do Leilão da Cessão Onerosa – indenização Petrobras.
Lei Nº 13.885, de 17/10/2019	Definiu o rateio entre estados e municípios de parte dos recursos do leilão de petróleo dos excedentes de barris de petróleo do pré-sal, realizado no dia 6 de novembro.
Lei Nº 13.879, de 3/10/2019 (Altera a Lei geral de telecomunicações)	Novo regime pressupõe pouca interferência estatal e liberdade para fixação de tarifas. A alteração de concessão para autorização deve ser feita pela Anatel, terá prazo determinado e só será possível após comprovação do cumprimento das metas de universalização e da competição efetiva entre empresas do setor

# Medidas aprovadas no Congresso Nacional em 2019

Lei	Descrição
Lei Nº 13.842, de 17/06/2019	Autoriza até 100% de capital estrangeiro em companhias aéreas com sede no Brasil.
Lei Nº 13.848, de 25/06/2019 (Lei das agências)	Unifica as regras sobre gestão, poder e controle social das agências reguladoras. A Lei garante a autonomia dessas autarquias, dá mais transparência à atividade regulatória e estabilidade nas decisões das agências reguladoras .
Lei Nº 13.821, de 3/05/2019 (Lei dos Consórcios Públicos)	Permite que estados, municípios e o Distrito Federal formem consórcio público e que esse consórcio firme convênio com a União, mesmo que um dos entes consorciados não tenha cumprido todas as exigências legais de regularidade.
Lei Nº 13.867, de 26/08/2019 (Altera a Lei de desapropriações)	Permite a utilização de mediação e arbitragem para fixação de indenização nas desapropriações.

# Medidas aprovadas no Congresso Nacional em 2019

Lei	Descrição
Lei Nº 13.874, de 20/09/2019 (Lei da Liberdade Econômica)	Viabiliza o livre exercício da atividade econômica e a livre iniciativa, garantindo a autonomia do particular para empreender. Altera diversos dispositivos legais existentes para restringir a atuação do Estado sobre atividades econômicas, relações jurídicas e normas regulamentadoras de profissões, juntas comerciais, produção, relações de consumo e meio ambiente.

# CASA CIVIL

PROGRAMA DE  
PARCERIAS DE  
INVESTIMENTOS **PPI**

-  [www.ppi.gov.br](http://www.ppi.gov.br)
-  [fb.com/ppinvestimentos](https://fb.com/ppinvestimentos)
-  [@ppinvestimentos](https://@ppinvestimentos)
-  [@ppinvestimentos](https://@ppinvestimentos)
-  [linkedin.com/company/ppinvestimentos](https://linkedin.com/company/ppinvestimentos)

